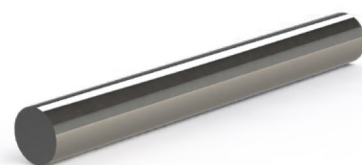
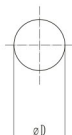
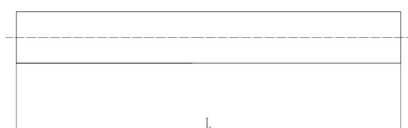


I NOSTRI PRODOTTI

C A R B U R O

CILINDRI PIENI

Cilindri in lunghezze fisse rettificati

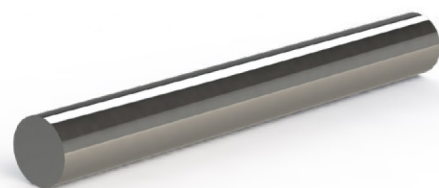


Cilindri lunghezze fisse rettificati

Diametro		Lunghezza		Grado		
D(mm)	Tolleranza	L(mm)	ST20F	ST10F	ST25F	
3.0	h5/h4	40	○	○	○	
3.0	h5/h4	50	●	○	○	
3.0	h5/h4	52	○	○	○	
3.0	h5/h4	60	●	○	○	
3.0	h5/h4	100	●	○	○	
4.0	h5/h4	50	●	○	○	
4.0	h5/h4	60	●	○	○	
4.0	h5/h4	75	○	○	○	
4.0	h5/h4	100	●	○	○	
5.0	h5/h4	50	●	○	○	
5.0	h5/h4	51	○	○	○	
5.0	h5/h4	60	○	○	○	
5.0	h5/h4	75	○	○	○	
5.0	h5/h4	100	●	○	○	
6.0	h5/h4	50	●	○	○	
6.0	h5/h4	51	○	○	○	
6.0	h5/h4	55	○	○	○	
6.0	h5/h4	60	●	○	○	
6.0	h5/h4	65	●	○	○	
6.0	h5/h4	70	●	○	○	
6.0	h5/h4	80	●	○	○	
6.0	h5/h4	100	○	○	○	
6.0	h5/h4	150	○	○	○	
8.0	h5/h4	60	●	○	○	
8.0	h5/h4	70	●	○	○	
8.0	h5/h4	80	●	○	○	
8.0	h5/h4	90	●	○	○	
8.0	h5/h4	100	●	○	○	
10.0	h5/h4	70	●	○	○	
10.0	h5/h4	72	●	○	○	
10.0	h5/h4	75	●	○	○	
10.0	h5/h4	80	●	○	○	
10.0	h5/h4	100	●	○	○	
10.0	h5/h4	110	○	○	○	
12.0	h5/h4	74	○	○	○	
12.0	h5/h4	80	●	○	○	
12.0	h5/h4	83	●	○	○	
12.0	h5/h4	85	●	○	○	
12.0	h5/h4	100	●	○	○	
14.0	h5/h4	84	○	○	○	
14.0	h5/h4	100	●	○	○	
14.0	h5/h4	101	○	○	○	
14.0	h5/h4	150	●	○	○	
16.0	h5/h4	100	●	○	○	
16.0	h5/h4	120	●	○	○	
16.0	h5/h4	130	●	○	○	
16.0	h5/h4	150	●	○	○	
18.0	h5/h4	100	●	○	○	
18.0	h5/h4	130	●	○	○	
18.0	h5/h4	150	●	○	○	
20.0	h5/h4	100	●	○	○	
20.0	h5/h4	130	●	○	○	
20.0	h5/h4	150	●	○	○	

●Disponibili a magazzino ○Disponibili a richiesta

Cilindri in lunghezze fisse rettificati - pollici



Cilindri in lunghezze fisse rettificati - pollici

Diametro		Lunghezza	Grado		
D(inch)	Tolleranza	L(inch)	ST20F	ST25F	ST12F
1/8	h5/h4	1-1/2	○	○	○
1/8	h5/h4	2	○	○	○
1/8	h5/h4	2-1/2	○	○	○
1/8	h5/h4	3	○	○	○
3/16	h5/h4	2	○	○	○
3/16	h5/h4	3	○	○	○
1/4	h5/h4	2	○	○	○
1/4	h5/h4	2-1/2	○	○	○
1/4	h5/h4	3	○	○	○
1/4	h5/h4	4	○	○	○
5/16	h5/h4	2-1/2	○	○	○
3/8	h5/h4	2-1/2	○	○	○
3/8	h5/h4	3	○	○	○
1/2	h5/h4	2-1/2	○	○	○
1/2	h5/h4	3	○	○	○
1/2	h5/h4	4	○	○	○
5/8	h5/h4	3-1/2	○	○	○
3/4	h5/h4	4	○	○	○
3/4	h5/h4	5	○	○	○
1	h5/h4	4	○	○	○

●Disponibili a magazzino

○Disponibili a richiesta

