

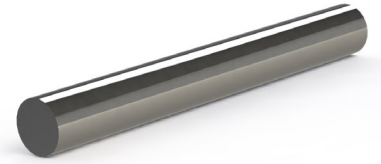
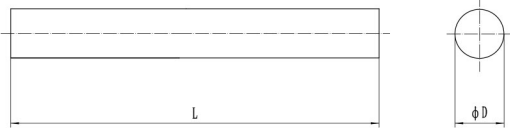
# OUR PRODUCT

C A R B I D E

SOLID RODS

— OUR PRODUCT —

## Ground Carbide Rods

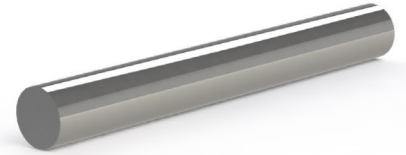
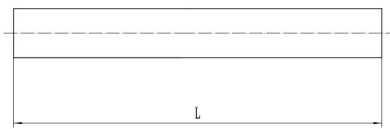


### Ground Carbide Rods -310/330mm

Diameter		Leng		Grade						
D(mm)	Tolerance	L(mm)	Tolerance	ST20F	ST25F	ST15F	ST15D	ST11F	ST12F	ST12NF
1.5	h5	310/330	+2.0~+6.0	○	○	○	○	○	○	○
2.0	h5	310/330	+2.0~+6.0	○	○	○	○	○	○	○
2.5	h5	310/330	+2.0~+6.0	○	○	○	○	○	○	○
3.0	h5	310/330	+2.0~+6.0	●	●	●	●	●	●	●
3.5	h5	310/330	+2.0~+6.0	○	○	○	○	○	○	○
4.0	h5	310/330	+2.0~+6.0	●	●	●	●	●	●	●
4.5	h5	310/330	+2.0~+6.0	○	○	○	○	○	○	○
5.0	h5	310/330	+2.0~+6.0	●	●	●	●	●	●	●
5.5	h5	310/330	+2.0~+6.0	○	○	○	○	○	○	○
6.0	h5	310/330	+2.0~+6.0	●	●	●	●	●	●	●
6.5	h5	310/330	+2.0~+6.0	○	○	○	○	○	○	○
7.0	h5	310/330	+2.0~+6.0	●	●	●	●	●	●	●
7.5	h5	310/330	+2.0~+6.0	○	○	○	○	○	○	○
8.0	h5	310/330	+2.0~+6.0	●	●	●	●	●	●	●
8.5	h5	310/330	+2.0~+6.0	○	○	○	○	○	○	○
9.0	h5	310/330	+2.0~+6.0	●	●	●	●	●	●	●
9.5	h5	310/330	+2.0~+6.0	○	○	○	○	○	○	○
10.0	h5	310/330	+2.0~+6.0	●	●	●	●	●	●	●
10.5	h5	310/330	+2.0~+6.0	○	○	○	○	○	○	○
11.0	h5	310/330	+2.0~+6.0	●	●	●	●	●	●	●
12.0	h5	310/330	+2.0~+6.0	●	●	●	●	●	●	●
13.0	h5	310/330	+2.0~+6.0	○	○	○	○	○	○	○
14.0	h5	310/330	+2.0~+6.0	●	●	●	●	●	●	●
15.0	h5	310/330	+2.0~+6.0	○	○	○	○	○	○	○
16.0	h5	310/330	+2.0~+6.0	●	●	●	●	●	●	●
17.0	h5	310/330	+2.0~+6.0	○	○	○	○	○	○	○
18.0	h5	310/330	+2.0~+6.0	●	●	●	●	●	●	●
19.0	h5	310/330	+2.0~+6.0	○	○	○	○	○	○	○
20.0	h5	310/330	+2.0~+6.0	●	●	●	●	●	●	●
21.0	h5	310/330	+2.0~+6.0	○	○	○	○	○	○	○
22.0	h5	310/330	+2.0~+6.0	●	●	●	●	●	●	●
23.0	h5	310/330	+2.0~+6.0	○	○	○	○	○	○	○
24.0	h5	310/330	+2.0~+6.0	●	●	●	●	●	●	●
25.0	h5	310/330	+2.0~+6.0	●	●	●	●	●	●	●
26.0	h5	310/330	+2.0~+6.0	●	●	●	●	●	●	●
27.0	h5	310/330	+2.0~+6.0	○	○	○	○	○	○	○
28.0	h5	310/330	+2.0~+6.0	●	●	●	●	●	●	●
29.0	h5	310/330	+2.0~+6.0	○	○	○	○	○	○	○
30.0	h5	310/330	+2.0~+6.0	●	●	●	●	●	●	●
32.0	h5	310/330	+2.0~+6.0	●	●	●	●	●	●	●

● Stock ○ Limited stock ◇ Other grades and dimensions on request

## Ground Fixed Length Carbide Rods - Inch



### Ground Carbide Rods - Inch

Diameter		Length		Grade		
D(inch)	Tolerance	L(inch)	Tolerance	ST20F	ST25F	ST12F
1/8	h5	13-1/14	+0.08~+0.24	○	○	○
3/16	h5	13-1/14	+0.08~+0.24	○	○	○
1/4	h5	13-1/14	+0.08~+0.24	○	○	○
5/16	h5	13-1/14	+0.08~+0.24	○	○	○
3/8	h5	13-1/14	+0.08~+0.24	○	○	○
7/16	h5	13-1/14	+0.08~+0.24	○	○	○
1/2	h5	13-1/14	+0.08~+0.24	○	○	○
9/16	h5	13-1/14	+0.08~+0.24	○	○	○
5/8	h5	13-1/14	+0.08~+0.24	○	○	○
11/16	h5	13-1/14	+0.08~+0.24	○	○	○
3/4	h5	13-1/14	+0.08~+0.24	○	○	○
7/8	h5	13-1/14	+0.08~+0.24	○	○	○
15/16	h5	13-1/14	+0.08~+0.24	○	○	○
1	h5	13-1/14	+0.08~+0.24	○	○	○

● Stock

○ Limited stock

◇ Other grades and dimensions on request



