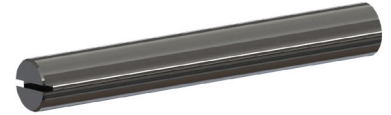
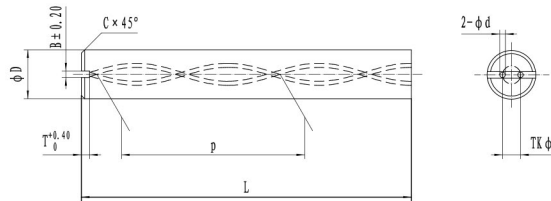


# OUR PRODUCT

C A R B I D E

PREFORMS

## Drill Blanks With Slot - 30°



### Drill Blanks with Slot - 30°

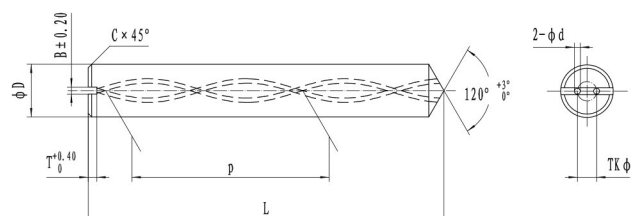
D(mm)	L(mm)	C(mm)	TK(mm)	d(mm)	"P(mm)"	$\alpha_{\max}$ (mm)	B(mm)	T(mm)				
6	h5	63	+1/0	0.50 ±0.10	2.60	+0/-0.40	0.70 ±0.10	32.65	+0.67/-0.65	0.15	1.50	0.90
6	h5	67	+1/0	0.50 ±0.10	2.60	+0/-0.40	0.70 ±0.10	32.65	+0.67/-0.65	0.15	1.50	0.90
6	h5	75	+1/0	0.50 ±0.10	2.60	+0/-0.40	0.70 ±0.10	32.65	+0.67/-0.65	0.15	1.50	0.90
6	h5	92	+1/0	0.50 ±0.10	2.60	+0/-0.40	0.70 ±0.10	32.65	+0.67/-0.65	0.15	1.50	0.90
8	h5	80	+1/0	0.60 ±0.10	4.00	+0/-0.40	1.00 ±0.15	43.53	+0.89/-0.86	0.15	2.00	1.40
8	h5	92	+1/0	0.60 ±0.10	4.00	+0/-0.40	1.00 ±0.15	43.53	+0.89/-0.86	0.15	2.00	1.40
10	h5	90	+1/0	0.60 ±0.10	4.80	+0/-0.60	1.40 ±0.15	54.41	+1.11/-1.08	0.20	2.50	1.65
10	h5	104	+1/0	0.60 ±0.10	4.80	+0/-0.60	1.40 ±0.15	54.41	+1.11/-1.08	0.20	2.50	1.65
12	h5	103	+1/0	0.80 ±0.10	6.25	+0/-0.80	1.40 ±0.15	65.30	+1.34/-1.30	0.30	2.50	1.75
12	h5	119	+1/0	0.80 ±0.10	6.25	+0/-0.80	1.40 ±0.15	65.30	+1.34/-1.30	0.30	2.50	1.75
14	h5	108	+1/0	0.80 ±0.10	7.10	+0/-0.80	1.75 ±0.20	76.18	+1.56/-1.51	0.40	3.00	2.15
14	h5	125	+1/0	0.80 ±0.10	7.10	+0/-0.80	1.75 ±0.20	76.18	+1.56/-1.51	0.40	3.00	2.15
16	h5	116	+1/0	0.80 ±0.10	8.30	+0/-0.80	1.75 ±0.20	87.06	+1.78/-1.73	0.40	3.00	2.30
16	h5	134	+1/0	0.80 ±0.10	8.30	+0/-0.80	1.75 ±0.20	87.06	+1.78/-1.73	0.40	3.00	2.30
18	h5	124	+1/0	0.80 ±0.10	9.55	+0/-0.80	2.00 ±0.25	97.95	+2.00/-1.94	0.50	3.50	2.50
18	h5	144	+1/0	0.80 ±0.10	9.55	+0/-0.80	2.00 ±0.25	97.95	+2.00/-1.94	0.50	3.50	2.50
20	h5	132	+1/0	1.00 ±0.10	10.40	+0/-1.00	2.00 ±0.25	108.83	+2.23/-2.16	0.50	3.50	2.70
20	h5	154	+1/0	1.00 ±0.10	10.40	+0/-1.00	2.00 ±0.25	108.83	+2.23/-2.16	0.50	3.50	2.70

● Stock

○ Limited stock

◇ Other grades and dimensions on request

## Drill Blanks With Slot And Pointed Cone - 30°



### Drill Blanks with Slot And Pointed Cone - 30°

D(mm)		L(mm)		C(mm)		TK(mm)		d(mm)		"P(mm)"	$\alpha_{\max}$ - (mm)	B(mm)	T(mm)	
6	h5	63	+1/0	0.50	$\pm 0.10$	2.60	+0/-0.40	0.70	$\pm 0.10$	32.65	+0.67/-0.65	0.15	1.50	0.90
6	h5	67	+1/0	0.50	$\pm 0.10$	2.60	+0/-0.40	0.70	$\pm 0.10$	32.65	+0.67/-0.65	0.15	1.50	0.90
6	h5	75	+1/0	0.50	$\pm 0.10$	2.60	+0/-0.40	0.70	$\pm 0.10$	32.65	+0.67/-0.65	0.15	1.50	0.90
6	h5	92	+1/0	0.50	$\pm 0.10$	2.60	+0/-0.40	0.70	$\pm 0.10$	32.65	+0.67/-0.65	0.15	1.50	0.90
8	h5	80	+1/0	0.60	$\pm 0.10$	4.00	+0/-0.40	1.00	$\pm 0.15$	43.53	+0.89/-0.86	0.15	2.00	1.40
8	h5	92	+1/0	0.60	$\pm 0.10$	4.00	+0/-0.40	1.00	$\pm 0.15$	43.53	+0.89/-0.86	0.15	2.00	1.40
10	h5	90	+1/0	0.60	$\pm 0.10$	4.80	+0/-0.60	1.40	$\pm 0.15$	54.41	+1.11/-1.08	0.20	2.50	1.65
10	h5	104	+1/0	0.60	$\pm 0.10$	4.80	+0/-0.60	1.40	$\pm 0.15$	54.41	+1.11/-1.08	0.20	2.50	1.65
12	h5	103	+1/0	0.80	$\pm 0.10$	6.25	+0/-0.80	1.40	$\pm 0.15$	65.30	+1.34/-1.30	0.30	2.50	1.75
12	h5	119	+1/0	0.80	$\pm 0.10$	6.25	+0/-0.80	1.40	$\pm 0.15$	65.30	+1.34/-1.30	0.30	2.50	1.75
14	h5	108	+1/0	0.80	$\pm 0.10$	7.10	+0/-0.80	1.75	$\pm 0.20$	76.18	+1.56/-1.51	0.40	3.00	2.15
14	h5	125	+1/0	0.80	$\pm 0.10$	7.10	+0/-0.80	1.75	$\pm 0.20$	76.18	+1.56/-1.51	0.40	3.00	2.15
16	h5	116	+1/0	0.80	$\pm 0.10$	8.30	+0/-0.80	1.75	$\pm 0.20$	87.06	+1.78/-1.73	0.40	3.00	2.30
16	h5	134	+1/0	0.80	$\pm 0.10$	8.30	+0/-0.80	1.75	$\pm 0.20$	87.06	+1.78/-1.73	0.40	3.00	2.30
18	h5	124	+1/0	0.80	$\pm 0.10$	9.55	+0/-0.80	2.00	$\pm 0.25$	97.95	+2.00/-1.94	0.50	3.50	2.50
18	h5	144	+1/0	0.80	$\pm 0.10$	9.55	+0/-0.80	2.00	$\pm 0.25$	97.95	+2.00/-1.94	0.50	3.50	2.50
20	h5	132	+1/0	1.00	$\pm 0.10$	10.40	+0/-1.00	2.00	$\pm 0.25$	108.83	+2.23/-2.16	0.50	3.50	2.70
20	h5	154	+1/0	1.00	$\pm 0.10$	10.40	+0/-1.00	2.00	$\pm 0.25$	108.83	+2.23/-2.16	0.50	3.50	2.70

● Stock

○ Limited stock

◇ Other grades and dimensions on request

